

Eighth Consignment  
**AUCTION**  
Of  
Steam Cars, Parts, Literature & Memorabilia



*Saturday — September 8, 2012 — 9:00 a.m.  
Kingfield, Maine — U.S.A.*

Preview:

Friday, September 7, 10:00 a.m. - 4:00 p.m.

Saturday, September 8, 7:00 a.m. - 9:00 a.m.

Sponsored by and Benefitting

**The Stanley Museum**

40 School Street, PO Box 77 — Kingfield, Maine 04947 — U.S.A.

Phone: 207-265-2729 — Fax: 207-265-4700 — Email: [maine@stanleymuseum.org](mailto:maine@stanleymuseum.org)

[www.stanleymuseum.org](http://www.stanleymuseum.org)

Sale Conducted by: Thomaston Place Auction Galleries

PO Box 300, Thomaston, ME 04861 — Website: [www.thomastonauction.com](http://www.thomastonauction.com)

Phone: 207-354-8141 — Email: [auction@kajav.com](mailto:auction@kajav.com)

Kaja Veilleux, ME Lic AUC#902 — John D. Bottero, ME Lic AUC#1237

**AUCTION**  
**STANLEY MUSEUM, KINGFIELD MAINE**  
**TERMS OF CONSIGNMENT**

**Commission schedule:** The Museum's commission, deducted from the auction price, is ten percent with a minimum \$15 per consignor. No reserves accepted. Cars and other major items negotiated separately. All fees benefit the Stanley Museum directly — Thank you!

**Terms of Sale**

1. **ADMISSION, BIDDER FEE AND RESERVED SEATS:** All bidders must register (\$25.00). Bidder registration will be from 10:00 a.m. to 4:00 p.m. (Friday, September 7, Preview) and from 7:30 a.m. on Saturday, September 8. This admits two to the Museum, to the Preview, and to two seats in the Reserved Bidders' section. If you receive a catalogue in the mail, you must still register in order to bid (no additional fee). Upon registration, you will be given two seat tags and a bidder's card. Seats may be reserved by attaching the tags to seats in the special Bidders' section.
2. **METHOD OF PAYMENT:** All settlements will be made on the day of the sale by cash, certified or cashier's check, bank money order, personal check accompanied by an irrevocable Bank letter of credit presented on bank stationary, or pre-approved check. Your item purchased will not be released until collected U.S. funds are received. Any banking arrangements including necessary wire transfers can be made through Camden National Bank, Depot Street, Kingfield, Maine 04947, 207265-2181, ext. 4401 or 4403.

**Conditions of Sale**

The property listed in this sale will be offered and sold under the following terms and conditions:

1. All items sold in this sale are sold in "as is" condition unless seller makes guarantee. All guarantees on consigned items are between the buyer and the consignor and in no event shall the Museum or Auctioneer be responsible for correctness, warranties, genuineness, or description of property;
2. The Auctioneer reserves the right to reject any bid or raise not commensurate with the value of the article being offered;
3. Though statements in the catalogue and on the Website and those of the Auctioneer have come from what are believed to be reliable sources, purchaser must understand he or she is buying property entirely upon his or her own examination and opinion;
4. The highest bidder acknowledged by the Auctioneer shall be the purchaser. In the event of any dispute between the bidders, the Auctioneer shall have absolute discretion as to who was the successful bidder or he may re-offer the disputed item for sale if he so wishes;
5. All transactions will be conducted according to Maine law and Title II of the Uniform Commercial Code. The Auctioneer reserves the right to refuse any bid;
6. Additional items which have not been listed in the catalogue or on the Website may be included in the Auction on the day itself;
7. All lots are subject to a 10% buyer's premium to be paid by the successful bidder as part of the purchase price. The buyer's premium directly benefits Museum programs and services;
8. On-line, Telephone, and Absentee bidding will incur an additional 3% to the buyer's premium, bringing it to 13%.
9. Absentee bids must be accompanied by 20% of the total bid in advance.
10. All sales are subject to 5% Maine Sales Tax, due at the time of payment of purchase price. Exempt sales will require the completion of exempt status forms;
11. Bidding on any item indicates your acceptance of these terms.

Stanley Museum, 40 School Street, PO Box 77, Kingfield, Maine (ME) 04947—USA  
Tel.: 207-265-2729 — Fax: 207-265-4700  
Email: [maine@stanleymuseum.org](mailto:maine@stanleymuseum.org) — Website: [www.stanleymuseum.org](http://www.stanleymuseum.org)

# The Stanley Museum

## YANKEE INGENUITY AT WORK

*The Stanley Museum keeps and shares  
the traditions of Yankee Ingenuity and creativity  
as exemplified by the Stanley Family  
in order to inspire these values  
in children and adults.*

The Stanley Museum  
40 School Street  
PO Box 77  
Kingfield, Maine 04947 — USA  
Telephone: 207-265-2729  
Facsimile: 207-265-4700  
E-mail: maine@stanleymuseum.org

**www.StanleyMuseum.org**

### Trustees

D. Howard Randall, Jr., '12, Chairman  
John C. Linderman, '13, Vice Chair  
Michael Roach, '13, Secretary  
Debbie Smith, '12, Treasurer  
Cynthia Bayerdorffer, '12  
Mark Cantor, '13  
Ralph Dykstra, '12  
Cally B. Gurley, '12  
Alma Hix, '13  
Bowden Kirkpatrick, '13  
Sam Kirkpatrick, '13  
Phil Lewis, '13

### Managing Trustee

D. Howard Randall, Jr.  
([steam-in-yankee@comcast.net](mailto:steam-in-yankee@comcast.net))

### Museum Staff

H. James Merrick, Librarian, Archivist &  
Collections Specialist  
([jimmerrick@stanleymuseum.org](mailto:jimmerrick@stanleymuseum.org))  
Kim Richmond White, Office Manager  
& Bookkeeper  
([kim@stanleymuseum.org](mailto:kim@stanleymuseum.org))

### Advisors

David W. Brownell  
Thelma S. Chenoweth  
C. Franklin Hix, Jr.  
Christopher Hutchins  
Richard J. Keenan  
Thomas C. Marshall  
Sarah W. Stanley

*Eighth Consignment Auction of the Stanley Museum*

ISBN 1-886727-08-2  
Copyright 2012, Stanley Museum, Inc.

### Membership Application—The Stanley Museum

40 School Street—PO Box 77—Kingfield, ME 04947—USA

Telephone: (207) 265-2729 • Fax: (207) 265-4700 • E-mail: [maine@stanleymuseum.org](mailto:maine@stanleymuseum.org)

Name: \_\_\_\_\_

Address: \_\_\_\_\_

City/Town: \_\_\_\_\_ State: \_\_\_\_\_ Zip: \_\_\_\_\_

Telephone: \_\_\_\_\_ Fax: \_\_\_\_\_

Email: \_\_\_\_\_

*Name and address of a friend who would like information on the Museum:*

Name: \_\_\_\_\_

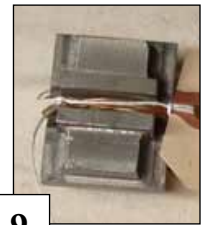
Address: \_\_\_\_\_

City/Town: \_\_\_\_\_ State: \_\_\_\_\_ Zip: \_\_\_\_\_

#### Circle Membership Category

Student	\$22.50	_____
Individual	\$45*	_____
Family	\$65*	_____
Contributing	\$100	_____
Supporting	\$150	_____
Business	\$375	_____
Associate	\$750	_____
Benefactor	\$1,500	_____
Patron (Life)	\$2,500	_____

\*add \$10 foreign mailing fee



1. Locomobile - Copper Air Tank
2. Locomobile - Copper Air Tank
3. Grout Steam Car - Fuel Pump
4. Grout Steam Car - Step Plate w/script
5. Grout Steam Car - Makers Brass Plate N.O.S.
6. Locomobile - Engine - mounted Water Pump
7. Locomobile - Hand Water Pump
8. Locomobile Engine Mounted Water Pump NEW
9. Grout Steam Engine - Slide Valves - NEW
10. Grout Steam Engine Pair of Piston Rods NEW
11. Locomobile 1902 Visible Water Glass C52 NOS
12. Locomobile - Hand Water Pump Lever
13. Two Spanner Wrenches
14. Locomobile - 1899 Chain Brake - Original Eq.



15



16



17



19



20



18



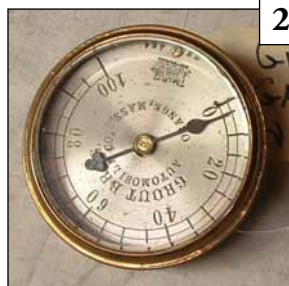
22



23



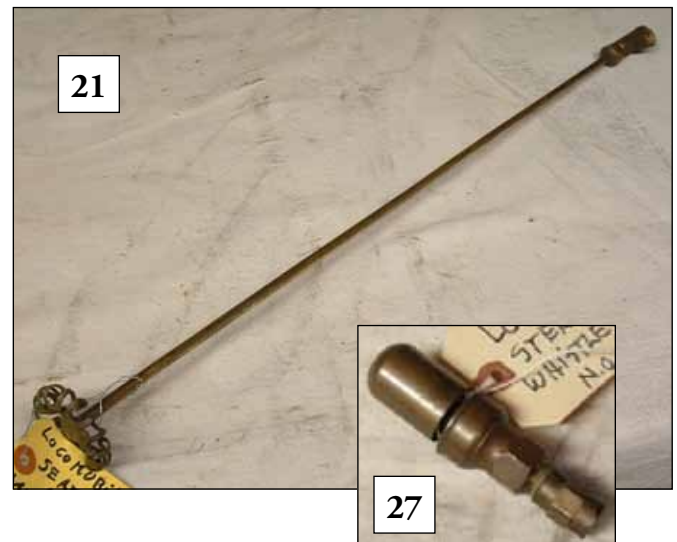
24



25



26



21



27



28

15. Locomobile - Water Glass Parts, 3

16. Locomobile - Two Tri-cock Valves

17. Locomobile - Brass Three Drip Oiler

18. Locomobile - Force Feed Oiler- Brass

19. Locomobile - Rear Seat - Unrestored

20. Grout Steamer - Pair Step Plates

21. Locomobile - Seat Mounted Fuel Hand Valve

22. Steamobile - 300 LB Gage - Keene, NH

23. Kensington Engine Wks.- 30 LB Gage

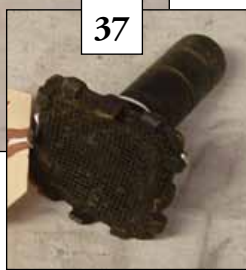
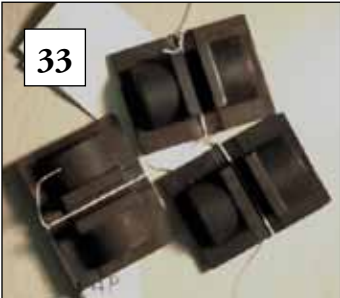
24. Grout - Steam Gage 500 lbs N.O.S.

25. Grout - Air Gage 100 Lbs N.O.S.

26. Grout Steam Car - Brass Script. N.O.S.

27. Locomobile - Brass Whistle N.O.S.

28. Stanley - Throttle Valve & Support Rod



29. Stanley - Throttle Valve

30. 2 Stanley - Fuel Filters #853 & 1 Misc. Filter

31. Stanley - Body Plate

32. Stanley - Body Plate

33. 3 Stanley - Slide Valves 20 H.P.

34. 5 Stanley - Hand Valves

35. 5 Stanley - Hand Valves

36. Stanley - Brake Pedal

37. Stanley - Syphon Foot Screen

38. 2 Stanley - Water Feed Pipes

39. Double Union - 1/4" Pipe to 1/8" Pipe

40. 3 Boiler/Burner Tie Downs

41. 2 Boiler Tube Flaring Tools

42. 2 Boiler Tube Flaring Tools



43



44



45



51



46



52



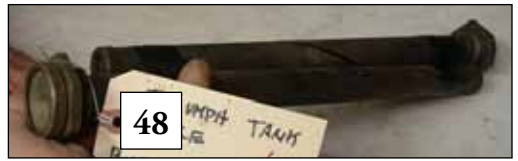
47



54



53



48



49



55



56



50

43. 2 Boiler Tube Flaring Tools

44. 2 Boiler Tube Flaring Tools

45. 1 1/2 Spring Leafs (5)

46. Pair Brass Hand Holds

47. Kerosene Tank Gage

48. Triumph Tank Gage - Boston Auto Gage Co.

49. Triumph Tank Gage - Boston Auto Gage Co.

50. Triumph Tank Gage - Boston Auto Gage Co.

51. Stanley - Fuel Automatic

52. Stanley - Fuel Automatic

53. Stanley - Steam Automatic

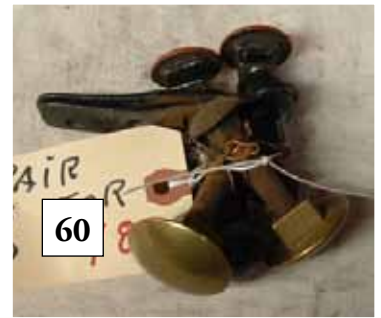
54. Stanley - Steam Automatic

55. Stanley - Steam Automatic

56. Stanley - Steam Automatic



57



60



61



58



63



67



59



66



64



62



70



68



69



65

57. Stanley - Low Water Automatic

58. Stanley - Low Water Automatic

59. Stanley - Low Water Automatic

60. Two Pairs Bolts For Top

61. Stanley - 20 HP Quadrant

62. 2 Boiler Tube Flare Anvils 15" & 18"

63. Six Boiler Lift Rings

64. 5 Emergency Brake Quadrants

65. Stanley - Hills-McCanna Oil Winker

66. Stanley - Hills-McCanna Oil Winker

67. Stanley - Hills-McCanna Oil Winker

68. 3 Stanley - Safety Valves

69. Vaporizer Entry Fitting for Burner

70. 28 Lin. Ft. Saylor Loom

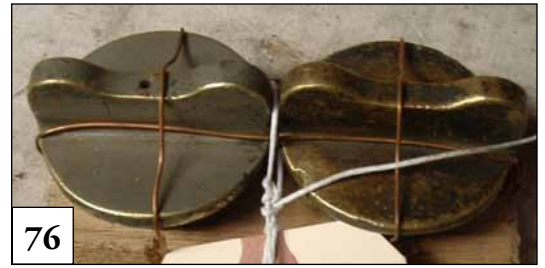




71



72



76



73



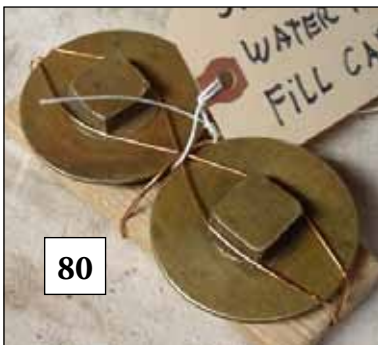
74



75



78



80



77



81



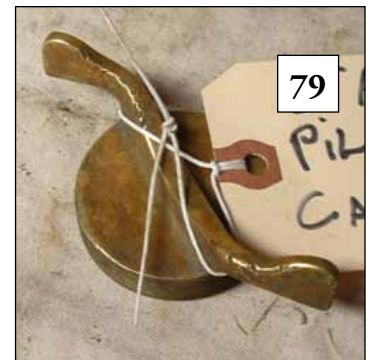
82



83



84



79

71. Stanley Engine Strap - 10 H.P.

72. Boiler Welding "Strong Backs"

73. Stanley - Engine Strap - 20 H.P.

74. Front Axle Mount Speedometer Drive

75. Front Axle Mount Speedometer Drive

76. Stanley - Pair Fuel Tank Caps - Brass

77. Stanley - Pair Fuel Tank Caps - Main and Pilot

78. Stanley - Cylinder Oil Tank Cap - Brass

79. Stanley - Pilot Tank Cap - Brass

80. Stanley - Pair Brass Water Tank Fill Caps

81. Stanley - Brass Water Tank Fill Cap

82. Stanley - Cylinder Oil Tank Cap - Brass

83. 4 Stanley - Dash Hand Valves

84. 3 Stanley - Dash Hand Valves



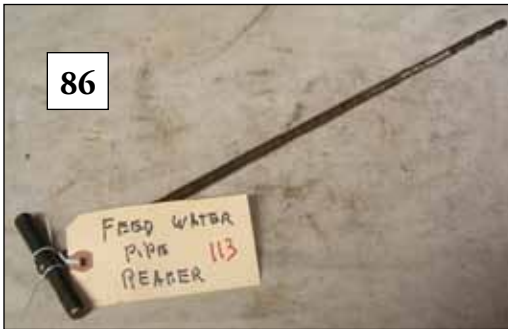
85



87



91



86



88



95



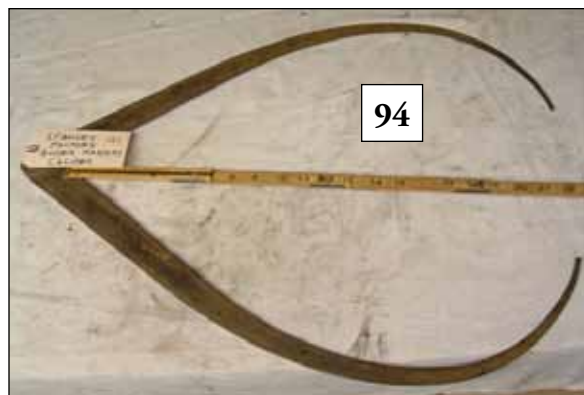
90



89



92



94



93



96

85. Bundle of Misc Rods

86. Feed-water Pipe Reamer

87. Stanley - Factory Metal

88. Pilot Fuel Tank - 7" O x 18" - Brass

89. Pilot Fuel Tank - 8" O x 24" - Brass

90. 3 Stanley - Hand Valves

91. Stanley Engine Cyl Block (3 1/4" x 41/4") Tap

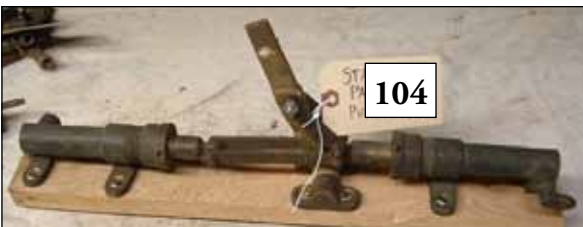
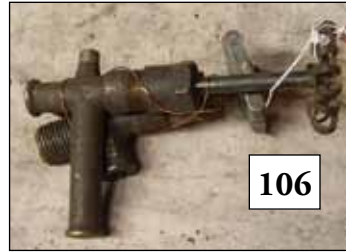
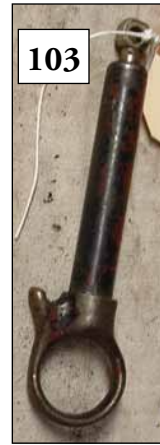
92. Running Board Tool Box 9" x 7" x 22" Restored

93. Running Board Tool Box 10" x 8" x 24" Restored

94. Stanley - Factory Boiler Makers Caliper

95. Pilot Fuel Tank 8" O x 20" - Brass

96. 2 sets of 4 Tire Valve Covers - Brass



97. Pair Perch Rods - 10 H.P. N.O.S.

98. Stanley - Rear Axle Drive Gear 20 H.P. 60 Tooth

99. Stanley - Kidney Casting

100. Stanley - Low Water Fuel Automatic

101. String of Stanley Springs

102. Stanley - 20 HP Cylinder Covers, Copper 2 Sets

103. Stanley - Condenser Hood Latch

104. Stanley - Pair Hand Pumps

105. Stanley - Pairs Hand and Water Power Pumps

106. Stanley - Hand Valves - Two

107. Stanley - Hand Valves - Two

108. Stanley - Hand Valves - Three

109. Stanley - Hand Valves - Four

110. Stanley - 20 H.P. Pistons - 2,good;1,new



111



113



114



116



112



117



115



122



123



118



119



120



121



125



126



124



127



128

111. 3 Ferrel Flaring Tools

112. Stanley - Boiler Check Valve

113. Hills-McCanna Cylinder Oil Check Valve

114. 3, Stanley - Check Valves

115. 3, Stanley - Check Valves

116. 3, Stanley - Check Valves

117. Hills-McCanna Cylinder Oil Check Valve

118. Stanley- Cylinder Oil Pump

119. Stanley - Cylinder Oil Pump

120. Stanley - Fuel Pump

121. Stanley - Fuel Pump

122. Glass For Visible Water Glass N.O.S. -3

123. 70 Lin. Ft. Rod Packing - size 1/8" WGT #1

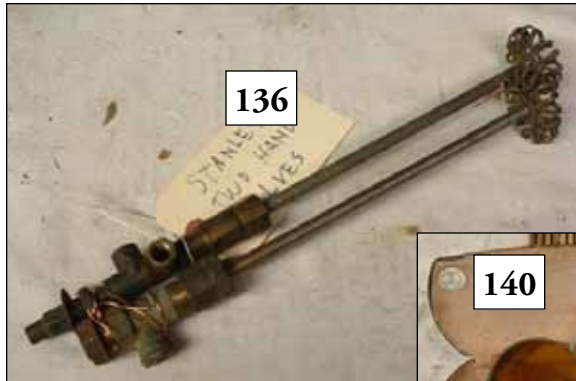
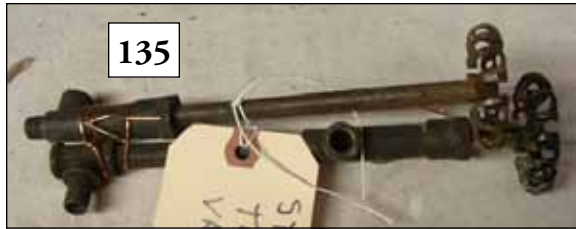
124. 18 Sq. Ft. Pyrimid Rubber

125. Stanley - Mountain Wagon Safety Valve

126. Stanley Steamer Coin Bank

127. Stanley - Safety Valve

128. Pair Brass Bullet Headlights



129. 1 - Four Tube Brass Whistle - Large

130. Four Tube Brass Whistle

131. Stanley - 1000 lb Steam Gage

132. Stanley - 200 Lb Air Gage

133. Copper Cylinderoil Can - mounted

134. Brass Whistle Valve off Mountain Wagon

135. Stanley - Hand Valves - 2

136. Stanley - Hand Valves - 2

137. 7 Pump Plungers

138. Grout - Steam Car Engine # 1197 - Complete

139. Stanley - Steam Engine 3 x 4 Complete # 0108

140. Pair Original Drivers Goggles

141. Pair Original Drivers Goggles

142. Light Steam Power - 69 issues : 1960 - 1975



143



144



146



148



145



149



150



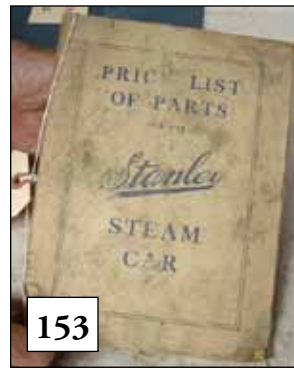
147



151



152



153



154



156



157



155

143. Steam Power - 33 Issues :1967-1970

144. The Steam Automobile - 30 issues: 1962 - 1975

145. Stanley - Body Plate 735B # 19114

146. Stanley - Motor Carriage Co., Pamphlet - 1916

147. Goats Steam Car Co. Specifications Pamphlet

148. Doble Steam Car Sales Brochure

149. Delling Steam Car Brochure

150. Stanley Steam Car Price List - 1917

151. Stanley Steam Car Sales Book - 1917

152. Stanley Steam Car Instructions - 1919

153. Stanley Steam Car Price List 1916

154. Stanley Steam Car Sales Book - 1916

155. 21 Old Steam Magazines

156. Stanley - 20 HP Belly Band

157. Stanley - Coffin Hood Finger Lift

## 158. Early Locomobile-Style Project Steam Car



The Locomobile Company of America was built on the success of the 1899 Stanley-designed steam runabout. Locomobile turned out 600-800 of these enduring little cars in their first full year of production, and quite a few survive to this day to be copied by contemporary craftsmen looking to reproduce one of the most iconic early steamers ever built. These early Locomobiles bore such a simple, popular design that they were also widely copied and imitated in their day, with many fly-by-night steam car “manufacturers” simply turning out Locomobile clones or kit cars in small quantities.

Building an example of a similar car – a “Likeamobile” – remains a popular hobby today. This Steam Project Car includes a “starter kit” of several vintage and reproduction parts. It sits on an early frame of

unknown origin (often typical of early kit cars) and has an accurate replica Locomobile body built by Carl Amsley. The wheels have been rebuilt with new spokes and tires. The successful bidder on this Steam Project Car may well find other items in the Stanley Museum Auction to help fill in parts that are needed to complete the car and get it up to steam. The Steam Project Car by itself comes with many parts to get one started.

The complete Lot includes: an unidentified frame; replica Locomobile body by Carl Amsley; original spindle back seat with several replacement (replica) seat spindles; Dayton 100lb air gauge; Locomobile 300lb steam gauge; Mobile throttle and shift rod; spare throttle and shift rod; ratcheting emergency brake; two foot steps; steering pivot.



## 159. 1901, 6.5 hp, Toledo Steam Carriage

In the late 1800, the U.S. bicycle industry was caught in a downward spiral of market saturation, over-supply and intense price competition. Many manufacturers turned to the automobile for a way forward. One of these, the American Bicycle Co. of Toledo, Ohio, founded by Albert Augustus Pope, owner of the Columbia Bicycle Co., created the 6.5 hp Toledo Steam Carriage in 1900.

The Toledo Steam Carriage is considered by many to be one of the best steam cars produced at the time. It was a very well made, high-quality machine, and included several features not seen in many of its contemporaries until years later, such as piston valves and an enclosed crankcase. Toledo steamers were entered into and won several races, and a Toledo was chosen as the first car to attempt

to be cross the Rocky Mountains. In the modern era, Toledo's have successfully completed the famed London to Brighton run. Toledo steam cars had a short but honorable history with production ceasing in 1903. Today, only about a half-dozen of these early Toledo steamers survive, mostly in museum collections.

The beautiful Toledo offered here was the last of many fine restoration projects of the late Art Hart, formerly of Chester, N.J., who lost his valiant battle with cancer in April of 2010. Art was well known and respected in the antique automobile community. As a former Trustee and Advisor of the Stanley Museum, Art had a particular passion for steam cars, and impeccably restored several. Art founded Vintage Steam Products, providing a range of carefully researched and re-manufactured steam car restoration products.



As Art's obituary noted, "He strove for excellence and believed that a job worth doing was worth doing right. This attitude resulted in National First Prize winning car restorations and a lasting preservation of automobile history."

Before his passing, Art made great progress restoring the Toledo, taking up the long-standing work of a previous owner. The chassis and body, with minor exception, are virtually complete. The new fire tube boiler, water, fuel, and air tanks, and rebuilt gauges, etc. are installed. A new, stainless steel burner awaits insulation and minor assembly to complete, and burner controls have been rebuilt. There are two engines. One is a spare; the other, after disassembly and restoration, awaits re-assembly and installation. Lights and other accessories have been re-plated with nickel

and await assembly. There many boxes of parts, too numerous to list, to complete this restoration. To provide guidance, a host of research documents, original literature, and photos are included.

Art (like teacher Randy Pausch, who lost his battle to pancreatic cancer and whose best selling book *The Last Lecture* urged each of us to celebrate the dreams we all strive to make realities) has left us this fine example of his legacy. And like Art, the completion of this beautiful Toledo will continue to inspire us all, for generations to come.







160. 1909 Stanley E2, 10Hp, 4 Passenger, SN# 4520

These peppy little 10 HP speedsters are considered by many to be great fun to drive.

This particular 4-passenger model is in a class by itself - a very original car, with a rich history of antique car/Stanley notable owners, according to the on-line version of the Stanley Register. Along with its current owner, these include Bob Bahre, Vernon D. Jarvis, S. D. Jarvis, D. Cameron Peck, J. B. Van Sciver, Jr, and Ralph G. VanDine. Indications are that it was discovered in the early 1940s, one of numerous old Stanleys resurrected during the gas-rationing years of WWII. This little survivor fortunately needed few alterations, aside from "modern" tires and wheels to fit them, to go from barn to roadway once again. And once the war was over, it passed into very attentive hands, receiving perhaps only one straightforward restoration in the late 1940s. It has been largely untouched since then.



According to the current owner, it has spent nearly 30 years preserved in a museum setting, documented by numerous photos and picture postcards over the years. While an older restoration, it would appear that this desirable "coffin nosed" early Stanley, with some attention to cosmetics and its mechanicals, could be a very presentable runner, only awaiting a new owner to take it out on the road again.



## 161. Stanley 1919 Model 735B 7-Passenger Touring

(NOTE: this car is currently located out-of-state, and will not be available for preview.)

It's not everyday that we have a "needs nothing, ready-to-tour" Stanley consigned to our auction. Not only is this 1919 "Vee-nose" 735B in fine running condition, but it comes with a rebuilt spare engine and many spare parts and fittings. To top it off, this car comes complete with a fully-equipped trailer. "Needs nothing. Ready to tour." The complete package includes:



1. 1919 Stanley 735B S/N 19009 Good running condition. Major items replaced: New 16" brake drums and linings; Recent Howard Johnson 23" boiler; New, rebuilt 23" burner with Packard Pilot; New King pins and bushings; New Condenser. Rebuilt electrical system converted to 12 volts w/ alternator; Recent Top with top hold-down brackets; Windshield Glass replaced with Safety Glass.

2. Spare 20HP Stanley engine in excellent rebuilt condition. S/N 735.2570.

3. Many spare parts, valves and fittings; Low water automatic, Water automatic; New Cylinder Oil pump, 2 original Cylinder Oil Tanks; Extra used burner castings, (Stanley & Baker) and many other items to numerous to mention (probably 1/2 pickup truck load).

4. 1991 Haulmark 22' Car Trailer. Extra wide axle; 8' spring loaded ramp door; 8' inside height (Car can be loaded without lowering top); Driver's door; Winch door; Curb side entry door; E track tie down system; Battery for lights. Plus: 10,000# Drawtite load-equalizer Hitch and 2 Spare Tires.



## 162. 1925 Stanley "SV" Steam Car - Model 252A Phaeton (Touring Car), Serial Number 25007

(NOTE: this car is currently located out-of-state and will not be available for preview.)

This is the second earliest 1925 Stanley documented to have survived. Perhaps only 50 were made in 1925 by the Steam Vehicle Corporation of America of Newton, Mass. This is the finest, un-restored, Stanley SV in existence. This car ran very well in September 2010. AACA Historic Preservation of Original Features:

- Original leather upholstery.
- Lockheed Hydraulic Brakes.
- Body shows very minor nicks and scratches, typical of an un-restored car.
- Missing rear window, replacement in hand but not installed.
- Model 750 water tank installed, however the original water tanks survives and comes with the car.
- The air pump is missing but was likely never installed by the factory.
- Connection required from generator to Waltham speedometer.
- Fuel tank gauge appears original.
- The boiler has been re-tubed but it believed to be the original boiler.
- The burner is a conventional drilled, two- venturie burner.

This car was owned at one time by Carl Amsley, who made the following modifications:

- Cut slot in front floor board and installed a hand water pump.
- Replaced pressure gauges in dash. They are correct but not original
- Added kidney style boiler water level gauge.
- Model A Ford rear tail light on left rear fender.
- May have painted the car.
- Replaced the original black condenser shell with nickel. The correct condenser and shell will be provided if the buyer desires.





170



171



174



172



173



175



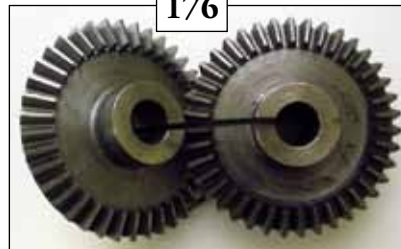
181



180



179



176



178



182



183



184



177

170. Stanley 740 Cond. Rear End Parts. This lot consists of four (4) items: 740 Axle Housings (pair) ; 740 Axle Shafts (pair); 74v0 Center Hub Section; 740 Hand Brake Bands (three)

171. Stanley 30HP Non-Cond. (NEW) Rear End Parts. This lot consists of seven (7) new items manufactured by John Goold. The seven items are: Axle Housings (pair); Brake Drums (pair); Hubs (pair); Axle Shafts (pair); Truss Rods (pair); Assembly Bolt Kit (bag); a Two-Piece Alum. Rear Housing

172. Stanley Model 70 Axle Shafts (L & R)

173. Stanley Model H/F Axles & Pinion Gears

174. Stanley Model H Rear End Parts. This lot consists of four (4) items: H Brake Mount (pair); H Brake Shoe Assembly (pair); H Brake Drums (pair); H Rear Hubs (pair)

175. New 20HP Bevel Gears with Pinion Gears

176. New 20HP Bevel Gears (pair)

177. New 30HP Bevel Gears (pair)

178. New 60 Tooth Drive Gear

179. 43 Tooth Model F Drive Gear, Used

180. 50 Tooth Model H Drive Gear, Used

181. 60 Tooth Drive Ring Gear, Used

182. Box Misc. Lot of Model H Engine Parts

183. Stanley Model 735 Engine and Rear End

184. Antique Dash Lamp



196



185



186



187



193



192



191



190



189



188



190



204



195



197



198



199



200



201



202



206



205



203

185. Antique Brass Tail Lamp

186. Antique Tail Lamp

187. Set of 2 antique side lamps

188. 600Lb Stanley Steam Gauge 1916-17

189. 600Lb Stanley Steam Gauge 1916-17

190. Duplex Fuel Gauge Condensing Car

191. Duplex Fuel Gauge Condensing Car

192. Stanley Air Tank Gauge Condensing Car

193. Duplex Fuel Gauge Condensing Car

194. 400Lb Locomobile Steam Gauge

195. 15 Misc. Gauges and Speedometers

196. American Steam Gauge and 2 Ashton gauges

197. Stanley Steam Automatic

198. Stanley Power Fuel Pump

199. Stanley Hand Pump 1911

200. Stanley Hand Pump assembly

201. "Blow Off" Fixture 740 – 750

202. Stanley Oil Pump for Condensing Car

203. Stanley 3 tube water level indicator

204. Stanley Spring Purchases for Condensing Car

205. Stanley Low Water Automatic 1910 –1924

206. Early Pilot Burner Casting

# Special Notice

Respect for the integrity of this auction is important to the Stanley Museum and to the community it serves, not only as a fundraiser for the Museum but also as the mainstream marketplace offering everyone in the steam car hobby equal access to the stuff of the hobby.

Purchase of this catalogue provides admission to the Museum auction and license to bid therein. The continued success of these auctions assures an orderly market of, and broad access to, original Stanley parts, steam cars, original parts of other steam marques, remanufactured and replica parts, literature, and more that is important to maintaining the steam car hobby.

These auctions are a source of important revenue for the Stanley Museum. All who wish

to take advantage of the opportunity this marketplace creates are invited and encouraged to join those who consign their parts and cars and thereby support the continuation and growth of this marketplace—and the preservation of the cars its participants enjoy.

*To conduct private sales, or solicit the audience gathered for the Museum auction for such private sales, would be an offense to those who consign, and to the Stanley Museum that makes this marketplace available .*

Thank you for your participation, support and enthusiasm.



209



207



208



212



210



211



215



216



213



214

207. Stanley Oil Pump for a Condensing Car

208. Stanley Hand Pump Parts for Condensing Car

209. Stanley Water Filter for Condensing Car

210. Stanley Power Fuel Pumps

211. Pump Rocker Arm for Non-Condensing

212. Stanley Power Fuel Pump for a Condensing car

213. Spring Shackles for condensing car

214. Ole Vikiri Brass Steam Whistle, 6 Tube

215. Bronze Valve Guides for a 20HP Engine, new

216. Kidney Gauge (boiler water level)



217. 1913 10HP Stanley Connecting Rods, Two

218. Kidney Gauge (boiler water level)

219. Stanley Power Fuel Pump & Guide 1915-1917

220. Stanley 20HP Connecting Rods, Two

221. Set of 2 Power Water Pumps Condensing Car

222. Set of 2 Power Water Pumps Condensing Car

223. Hand Pump Assembly w/Linkage for Condensing Stanley

224. Wheel Puller

225. Branch Fork, early

226. Pilot Casting

227. 3 Tube Indicator with Low Water Automatic

228. 5 Low Water Automatics

229. Hand Pump Lever/Actuator

230. Misc. Steam Fittings and Parts





231



232



237



233



235



234



239



236



238

231. Brass Bulb Horn & 2 reeds

232. Brass Hind View Mirror

233. 1914, 10 HP, Stanley Rear Axle Housing Assy. Differential Assy. that has been brazed, 2 Drums & shoes

234. Wood Frame & Body Frame for M74 Touring. The wooden mainframe and body frame pictured is one of three reproduced for the late Frank Cooke. Before his passing, Frank and his son, Bill, reconstructed a Stanley Model 74, 20 HP, touring car using original running gear and other parts that Frank had accumulated over his many years of collecting. Frank accumulated many other parts suitable to build a second car. Many of those are listed in the lots that follow.

235. 20 hp Condensing Engine, SN #7352877. Suitable for 20 HP Stanley, Model 74

236. Water Tank Suitable for Model 74, 20 HP Car. Suitable for 20 HP Stanley, Model 74

237. Pair of Stanley Rear Axle Housings. Suitable for 20 HP Stanley, Model 74

238. Pair of Stanley Rear Axles with Gears. Suitable for 20 HP Stanley, Model 74

239. Pair of front road springs suitable for 20 HP. Suitable for 20 HP Stanley, Model 74



240. Pair of rear road springs suitable for 20HP. Suitable for 20 HP Stanley, Model 74

241. Stanley 20HP Front Axle for 1912/13. Suitable for 20 HP Stanley, Model 74

242. Stanley 10HP Engine, SN #6-822. Free, turns over nicely.

243. Late Non-Condensing Dual (Fuel/Pilot) Tank

244. Early Copper Water Tank. Measurements and appearance are the same as a Stanley E2. First two letters of black script on tank appear to read E2.

245. Early Stanley Engine, 7.5 HP(?), SN #01488. Horizontal style, fitted with a chain drive sprocket. Turns over.

246. 2 Piece Brass Windshield 1910, 10 HP Stanley. Includes telescoping support rods.

247. 10 hp Engine Cylinder Block. Bore has some pitting, valve surface appears good.

248. Roll of Garlock 8909 Packing 1/8" 3.2mm, 1Lb.

249. Fuel Pressure Regulator

250. Stanley 600 Lb Steam Gauge



251



259



252



253



255



261



254



256



262



258



257



263



260

251. Stanley Dual Pilot & Fuel Pressure Gauge

252. Steam Whistle, 4 tube

253. 2 Stanley Pilot Castings

254. Misc. Fittings, Clamps & Parts. Includes 20Hp steam chest cover.

255. 2 Stanley Wheels with Rims & Tires - 25"

256. 6 Stanley 14" Brake Shoes

257. 5 Stanley Brake Dust Covers, Backing Plates

258. 4 Stanley 26" Fellows, Front and Rear. One spoke missing from each front and rear assembly.

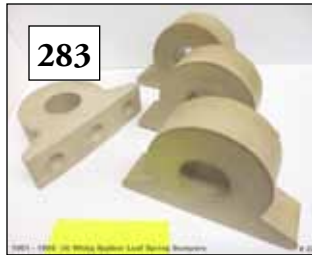
259. 2 Brass Gray & Davis Headlamps, incomplete

260. Steam Loop

261. 5 Gal. of Mobil Extra Hecla Super Steam Cyl. Oil. Compounded for non condensing cars.

262. 1905 - 1914 Touring car door Handles. New/remanufactured Stanley parts faithfully reproduced by Allen Blazick and Steam & Stuff.

263. 1908-1910 Gas Fuel Pump complete #540



264. 1913-1914 Main Fuel/Pilot Tank Valve

265. 1908-1909 Set Power Water Pumps

266. 1902-1904 Locomobile Fuel & Water Pumps

267. 1908 Gasoline Pump, complete

268. 1910-1914 #652-20 Valve

269. 1909-1912 Water Tank Level Indicator

270. Reserved

271. Siphon, complete

272. Safety Valve, complete

273. 1908-1917 Dash Water Level Indicator

274. 1909-1912 Lower Steering Bracket #209B

275. Pair Reverse Pedal Bracket #235

276. Pair Pedal Shaft Bracket #254. Can also be used for Throttle Arm Lever.

277. 1910/11 Firewall Steering Col. Brkt #209B

278. 1905-1911 Steering Sector

279. 1910-1917 Set of Foot Rest Bracket Ends

280. 1909 Pair Cross Brake Shaft Brackets

281. 1910 Pair Cross Brake Shaft Brackets

282. 1910-14 2 Pump Dr. Rocker Shaft Brkt #254

283. 1901-06, 4 White Rubber Leafspring Bumper

284. Quantity (20) 1/4" Flare Nuts

285. Qty. (6) 1/4" Assorted Elbows, T's & Crossed



286



287



288



289



290



294



296



298



291



295



297



299



292



304



300



303



293



306



307



301



305



302

286. Qty. (8) 1/8" Pipe Connector, T's & Elbows

287. 1901 - 1914 Fuel Pump Lubricator Bracket

288. 1910 - 1911 Dashboard Cowl Bracket

289. 1900-11, Pair Brake Backing Plate Brackets

290. Fuel Regulator #460 , complete

291. 1905 to 14 Steam Automatic #430, complete

292. 1910 - 1914 Pair Power Water Pumps

293. 1902 - 1908 Pump Drive Pillow Blocks. Can be used for Throttle Rod Arm Brackets and with 1913 - 1914 Power Oil Pump below.

294. 1909 - 1912 Oil Pump, complete

295. 1905 - 1907 Oil Pump

296. 1905 - 1914 Eco Acetylene Firing up Torch

297. Stanley 20 HP Engine Packing Nut Wrench

298. Stanley Hand Water/Fuel Pumps, complete

299. 1909 Pair Pump Drive Rocker Shaft Brackets

300. 1913 - 1914 Power Oil Pump, complete

301. 1905 - 1924 Siphon Hose End (needs screen & nipple)

302. 1909 - 1914 Oil, Fuel or Water Plugs & Caps

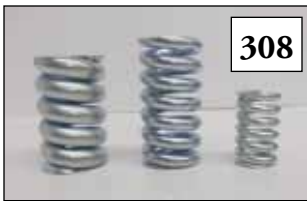
303. 1913 - 1914 Water Pump Hose Extensions

304. Reversing Dog for 20HP and 30HP Engine

305. 1910 - 1914 Valve Set. #650-10, 651-11, 652-21 & 652-20

306. 1909 - 1914 Set Ball Style Check Valves. #658, 659 & 660

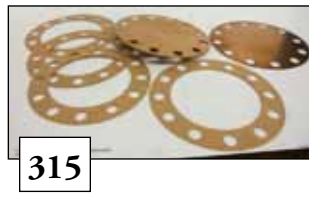
307. 1901 - 1906 Set Flapper Style Check Valves



308



318



315



314



309



319



316



323



311



321



317



324



322



320



325



313



327



328



312



326



310

308. New Springs - Fuel & Steam Auto & Safety

309. Bypass Bracket & Handle for 1 1/4" Column

310. 1911/23 Correct Drip For 3 Tube/Low Water Safety Combination

311. 1911-1914 Cast Steel H Pattern For Water, Oil & Fuel Pumps (raw casting)

312. 1901-1914 Drip Valve For Bucket Indicator, Also Same Valve With Lace Handle For Drip on Low Water Safety

313. 1909-14, Winker Fittings #651-4 & 644-3

314. 1909-14, Set of (4) 20HP Bronze Hub Caps

315. Quantity (2) Beryllium Copper Steam / Fuel Automatic Diaphragms With (4) Paper Gaskets

316. 1906 -14, Quantity (3) Pedal Return Springs

317. 1909 & Earlier Valve Set (4) Including #650-1, 650-2, 650-3, 650-6 & 645-1 Plus(2) T Fittings

318. 1909 & Earlier Valve Set (4) Including #650-1, 650-2, 650-3, 650-6 & 645-1 Plus(2)T Fittings

319. (5) 1/4" Elbows #641-1. Each comes with a #640 Flare Nut

320. (5) 1/4" Straight Fitting #644-1 s. Each comes with a #640 Flare Nut

321. (4) 1/8" Straight Fittings With Flare Nuts

322. 1915 - 1923 Condensing Water Filter

323. 1905 - 1914 Quantity (2) In-Line Oil Checks

324. Qty. (2) Hood Linger Lifts Non Condensing

325. 1909 Bronze Steering Sector. Fits Stanley Model U, R, M & Z

326. 1910 - 1914 Quantity (5) Valve Caps

327. 1910 - 1914 Set 20HP Perch Pole Brackets

328. 1909-14 (2) Power Water Pump Rebuild Kit



329



330



331



332



333



335



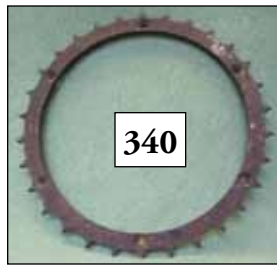
334



336



341



340



342



344



337



338



339



343

329. 1909-14 (2) Power Water Pump Rebuild Kit

330. 1906-14 (2) Knurled Hose Bib Filler Fittings

331. 1915 - 1923 Condensing Power Fuel Pump

332. Quantity (20) 5/16" Copper Line Clips

333. 1905 - 1914 Universal Joint & Drip Valve. New/remanufactured Stanley parts faithfully reproduced by Allen Blazick and Steam & Stuff.

334. Stanley Condensing Water Pumps

335. 735/740 Cond. Stanley Differential Pump Drive

336. EX/E2 Stanley Wheel Hubs , 5 1/2"

337. Water Level Standpipe Used with Bristol-Derr Gage

338. Locomobile Chain Tensioner

339. Early Speedometer Gear. Reads: Stewart Warner #25,,9P, 68T

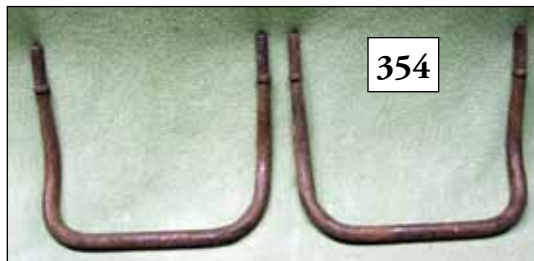
340. Locomobile Block Chain Differential Gear

341. Locomobile Block Chain Differential Gear

342. 735 Kidney Water Level Gauge. Complete, minus needle

343. 735 Kidney Water Level Gauge, w/needle & dial

344. Locomobile Steam Automatic Burner Valve Combo



345. Early Steam Automatic Burner Valve Combo

346. 1908-1912 Stanley Fuel Pump

347. Early Front Spindles. 5/8" dia. king pin

348. Displacement Oiler

349. Top Iron Brackets, Mountain Wagon

350. Bypass Rod and Steering Column Brackets

351. Bypass Rods

352. Locomobile Water Pump Housing w/checks

353. Crubin Empire (Cond.) Valve w/ Stem & Handle

354. Early 10 HP Headlight Brackets

355. Stanley Safety Valve

356. Six "Petcock" Valves

357. Stanley EX/E2 Axle-1 3/4" tube

358. Stanley 1911/12, 10HP Front End- 2" tube

359. Stanley 1910, 10HP Rear Fenders. Two of the fenders shown are original left and right rear fenders. The third fender is a new right fender with some rust.





360



361



362



366



369



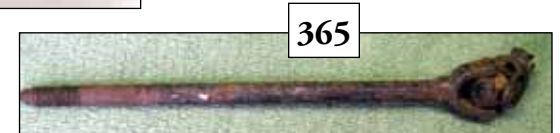
363



364



367



365



368



370

360. Stanley, Cond. Car Spare Tire Spider and 25" Rim

361. Stanley 10HP Hood, 1910-11

362. 4 Stanley Wheels, 28", 5 1/2" flange

363. Pair of Spring "Snubbers"-2" Spring

364. Stanley Fuel & Oil Pump Guides

365. Stanley Drip Valve Stem w/ u-joint

366. Misc. Valve Handles

367. 10 Misc. Stanley Valves

368. 11 Misc. Stanley Valves

369. 7 Misc. Stanley Valves

370. Running Board Luggage Rack



371

373



372



374



377



375



378



379



380



381



376



382



383

371. Nickel Snake w/Brackets. The consigner made this device to fit his condensing Stanley. It can be hooked up to blow steam.

372. Two Oil Separators for Condensing Car

373. Brass Steam Whistle

374. Front Cowl for Late Condensing Stanley

375. Wicker Basket

376. Picnic Basket with Service

377. 6 Volt Dynamo Restored/Rebuilt. This generator is off a 1924 Stanley.

378. Stanley Condensing Throttle

379. 2 New John Goold Cond. 20HP Valves

380. Set of 3 Spanner Wrenches

381. Set of 3 Spanner Wrenches

382. Foot Pedal for a Steam Whistle

383. License Plate Bracket for Cond. Car



384



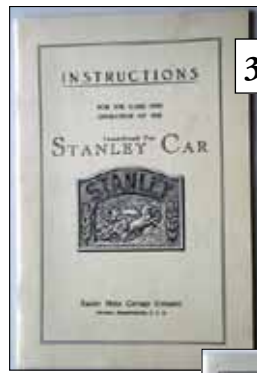
386



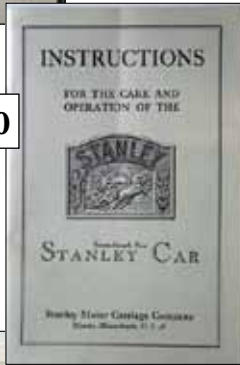
388



395



389



390



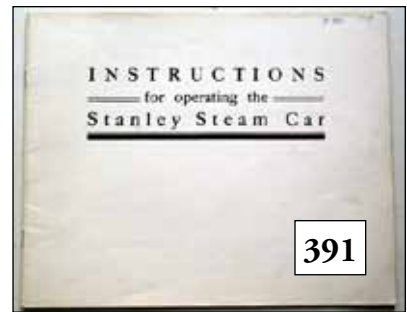
393



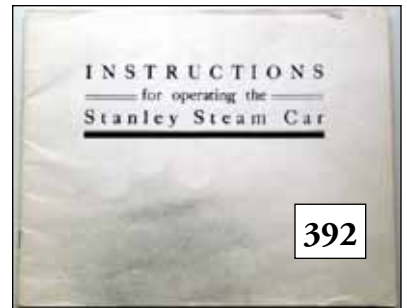
387



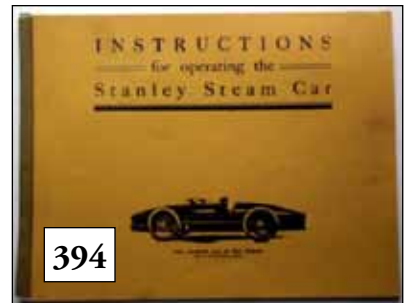
385



391



392



394

384. Nickel Horn, needs bulb

385. Auto Lunch Box

386. 20HP Stanley Engine Parts

387. Cond. Exhaust Water Pre-Heat Assy. This unit was constructed to work with a condensing Stanley that is being run non-condensing.

388. 2 Inside Door Handles for Later Stanley. Brass Castings.

389. 27th Year Stanley Instruction Manual

390. 27th Year Stanley Instruction Manual

391. 1911 Stanley Instruction Manual

392. 1911 Stanley Instruction Manual

393. 1916 Manual "The Season of 1916"

394. 1908 Stanley Instruction Manual

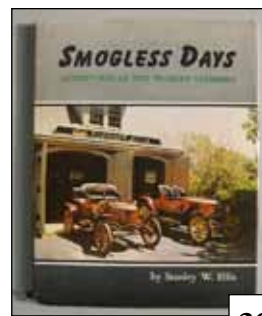
395. "The Live Wire" Sept. 1910. Pre-Inventory Sale of the Excelsior Supply Co.



396



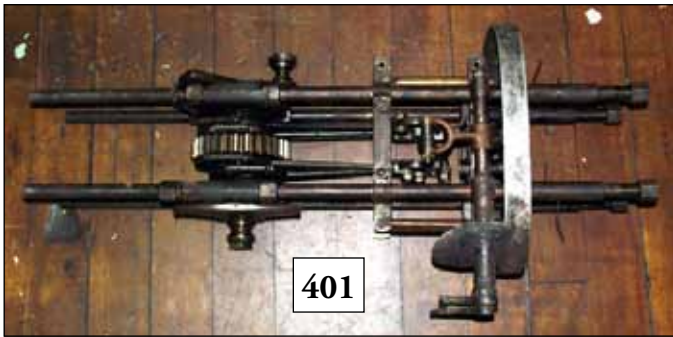
397



398



399



401



406



408



404



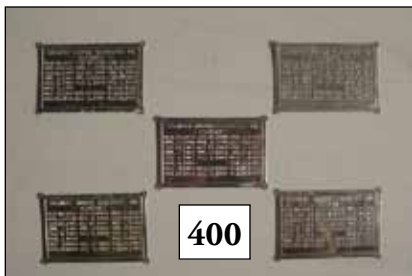
405



403



402



400



407

396. Four Magazines Referencing Stanley Cars

397. "Pointed Questions & Direct Answers" Published by Stanley Motor Carriage Co.

398. Smogless Days by Stanley Ellis (autographed)

399. Stanley 200psi Gauge

400. 5 Reproduction Stanley Pat. Date Plates

401. 10HP Stanley Engine for Parts

402. Pair of Front Fenders 1914 Stanley

403. Pair of Side Cowlings 1914 Stanley

404. Side Lamp RH

405. Side Lamp RH

406. Side Lamp LH

407. Side Lamp RH

408. Rear Lamp



409



410



411



413



412



417



418



416



415



414

409. Side Lamp RH

410. Nickel Dash Lamp with Cracked Glass

411. Brass Dash Lamp Incomplete

412. 10HP Steam Chest welded

413. Pair of Wheel Drums and Backing Plates 1914?

414. 1-Gallon Steam Cylinder Oil

415. Misc. Burner Parts and Bonnet

416. Luggage Rack

417. Approximately 5' Boiler Insulation- Fiberfrax

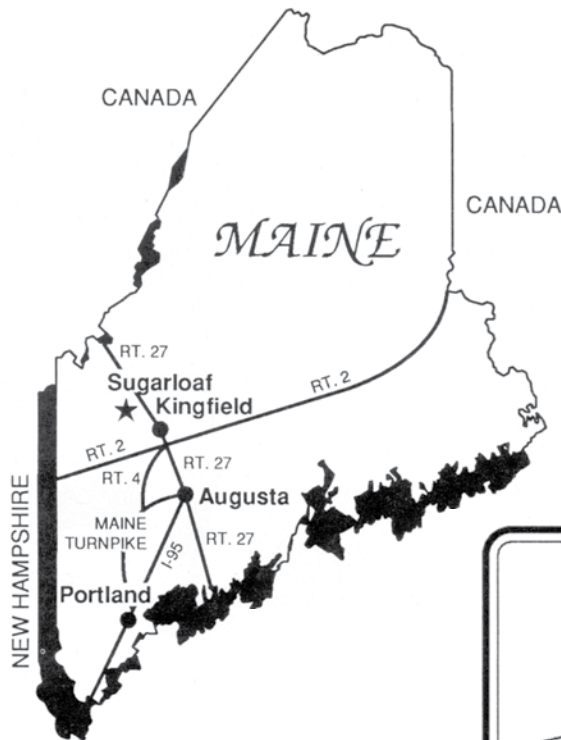
418. Iron Steam Pipe & 4 Brass Water Pre-Heat Pipes

# DIRECTIONS

**From the South:** Auburn/Exit 75, Route 4 to 27 to Kingfield (less than two hours from I-295); or I-95 to Belgrade exit after Augusta then State Route 27 approx. one hour to Kingfield.

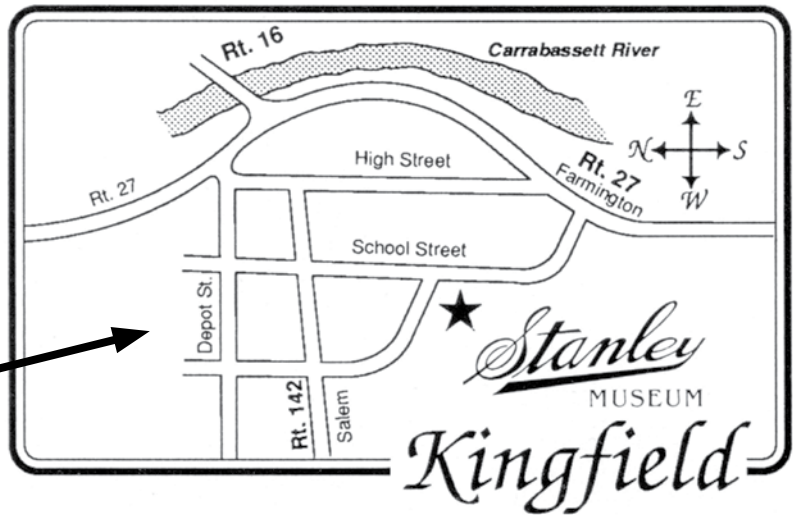
**From the North:** Approximately one hour from the Canadian border on Maine State Route 27.

**From the East or West:** US Route 2 to Farmington, north 30 minutes on State Route 27.



Driving Times to Kingfield:  
From Boston  
4 hours  
From  
New York City  
8 hours

*Truck & trailer parking available at the Knapp lot off Depot Street*



The Stanley Museum would like to thank all of those who consigned items and all of those who will join them as bidders to make this year's auction a grand success. We are grateful for the opportunity to partner with the Kingfield POPS and their Festival of the Arts Committee's Antique Appraisal Weekend. A special thank you to Thomaston Place Auction Gallery for volunteering the professional services of their firm and staff in conducting both events. We could not do it without their generosity, efforts, and support.

Sincerely,

*Howard Randall*

D. Howard Randall  
Managing Trustee  
Stanley Museum

